

LSUHSC PEDIATRIC RESIDENTS 2025 – 2026:

PROGRAM LEADERSHIP



Chelsey Sandlin, MD
Program Director



Lauren Davis, MD
Associate Program
Director



Jay Hescok, MD
Associate Program
Director



Suzanne LeFevre, MD
Associate Program
Director



Christy Mumphy, MD
Associate Program
Director

CHIEF RESIDENTS



Madeleine Robert
Stansberry, MD
LSUHSC-NO



Nicholas Tadros, DO
Edward Via College of
Osteopathic Medicine

PL III



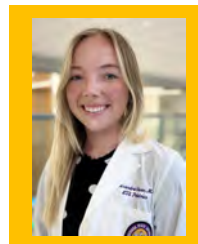
William Arnold, MD
LSUHSC-NO



Ushma Bhandary, MD
LSUHSC-NO



Chandler Cissel, MD
University of Louisville



Lexi Glaser, MD
Northeast Ohio
Medical University



Meredith Kovach, MD
Tulane University



Casey Landreneau
Baggett, MD
LSUHSC-NO



Aaliyah Saafir, MD
Howard University



Danielle Sketchler, MD
LSUHSC-NO



Leah Smith, DO
West Virginia School of
Osteopathic Medicine



Sarah Stobbs, MD
LSUHSC-NO



Courtney Suiter, MD
East Tennessee
State University



Caroline Trammell, MD
LSUHSC-NO

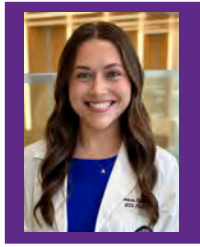


Darrius Williams, MD
University of
Mississippi

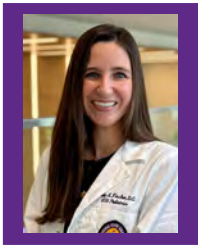


Zaria Williams, MD
Howard University

PL II



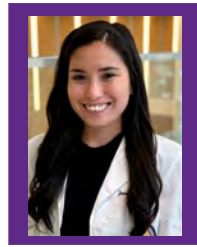
Cambria Boone, MD
University of Mississippi
School of Medicine



Kiley Fincher, DO
VCOM Louisiana



Shannon Glennon, MD
LSUHSC-NO



Jasmine Grossman, MD
West Virginia University
School of Medicine



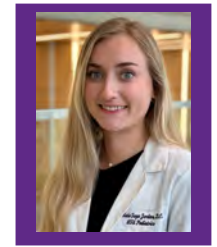
Ariel Hall, MD
University of Florida
College of Medicine



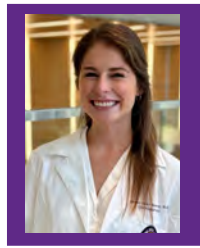
Amelia Haydel, MD
LSUHSC-NO



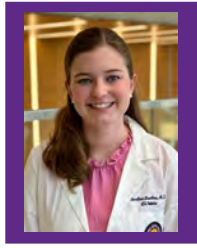
Abby Hess, MD
LSUHSC-NO



Sage Jordan, DO
Alabama College of
Osteopathic Medicine



Eleanor Koonce, MD
LSUHSC-NO



Caroline Lawless, MD
LSUHSC-NO



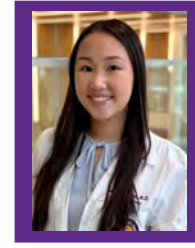
Emma Malloy, MD
Creighton University
School of Medicine



Meghan McCord, MD
LSUHSC-NO



Harrison Millar, MD
LSUHSC-NO



Carrie Pham, MD
LSUHSC-NO



Darien Power, DO
VCOM Auburn



Jeremy Scheffler, MD
LSUHSC-NO



Hannah Sibley, MD
LSUHSC-NO

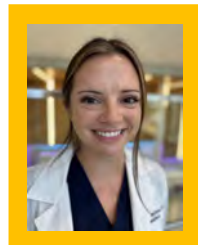
PL I



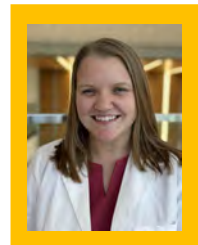
Ryan Agsunod, MD
LSUHSC Shreveport



Kayla Beamon, MD
University of
Mississippi



Logan Brickner, DO
William Carey
University College of
Osteopathic Medicine



Alyssa Bryant, MD
University of Arkansas



Will Davis, MD
LSUHSC Shreveport



Nathan MacMaster, MD
Tulane University



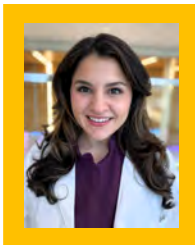
Natasha Mark-Borno, MD
Ponce Health
Sciences University



Jack McDonnell, MD
Tulane University



Jessica McKenzie, MD
University of
Mississippi



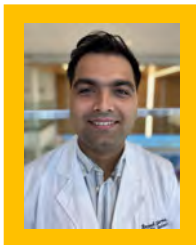
Margaret Mena, MD
LSUHSC-NO



Holly Monk, MD
LSUHSC-NO



Catherine Nguyen, DO
Edward Via College of
Osteopathic Medicine



Rajesh Sharma,
MBBS
Tribhuvan University



Henry Smith T, MD
University of
Alabama



Tina Tran, DO
University of the
Incarnate Word
School of Osteopathic
Medicine



Amy Urbina-Pacheco, MD
Tulane University

LSUHSC MEDICINE / PEDIATRIC RESIDENTS 2025 – 2026:

PROGRAM DIRECTOR

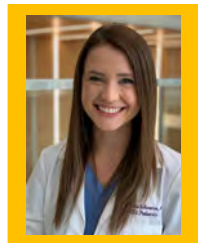


Corey Gregg, MD

CHIEF RESIDENTS



Chloe Spears, MD
LSUHSC-NO



McKenzie Schwarze, MD
University of Illinois

PL IV



Nali Gillespie, MD
Duke University



Samuel Maltby, MD
University of Colorado



Tejal Naik, MD
Brody School of
Medicine



Carter Pesson, MD
LSUHSC-NO

PL III



Arati Joshi, MD
University of
Tennessee



Andree Judd, DO
Edward Via College of
Osteopathic Medicine



Lexi Lapointe, DO
Philadelphia College of
Osteopathic Medicine



Hina Qureshi, MD
University of
Mississippi



Hannah Rader, MD
Saint James School
of Medicine Anguilla

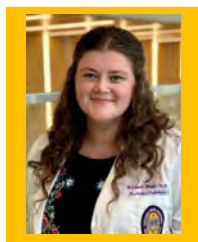


Amelia Young, DO
Liberty University College
of Osteopathic Medicine

PL II



Tara Bates, MD
University of Arkansas



Hannah Monk, MD
LSUHSC Shreveport



Kayla Rykiel, MD
Florida State University

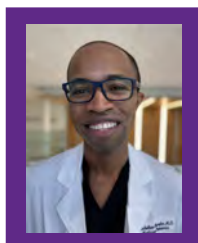


Dan Ta, MD
Brody School of
Medicine

PL I



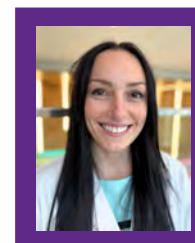
Leah Noe, MD
University of Florida



Ud Okorafor, MD
Hackensack Meridian
School Of Medicine



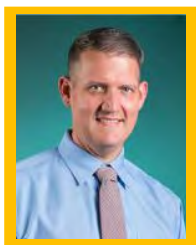
Nathan Williams, MD
University of
Tennessee



Lauren Ziegenbein, MD
University of Nebraska

LSUHSC PEDIATRIC / EMERGENCY MEDICINE RESIDENTS 2025 – 2026:

PROGRAM LEADERSHIP



David Rayburn, MD
Program Director



Kathryn Hodgdon, MD
Associate Program
Director

PL V



Jodi Hardy, MD
LSUHSC-NO

PL IV



Lauren Blasen, DO
Michigan State University



Jonah Gevercer, DO
Rocky Vista University

PL III

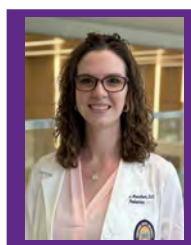


Jessica Aird, DO
University of North Texas



Baylee Bruton, MD
Mercer University

PL II



Natalya Meinhart, DO
Marian University

PL I



Skylar Taylor, DO
Edward Via College of
Osteopathic Medicine