



**Raymond Watts, MD**  
Professor and Head  
Department of Pediatrics

## LSUHSC PEDIATRICS FACULTY:

### ALLERGY/IMMUNOLOGY



**Ken Paris, MD, MPH**  
Associate Professor  
Division Head



**Andrew Abreo, MD**  
Assistant Professor



**Augusto Ochoa, MD**  
Professor



**Luke Wall, MD**  
Associate Professor



**Elizabeth Wisner, MD**  
Assistant Professor

### AMBULATORY PEDIATRICS & ADOLESCENT MEDICINE



**Ryan Pasternak, MD, MPH**  
Professor  
Division Head  
Vice Chair, Pediatric  
Community Health  
and Advocacy



**Sue Berry, MD, MPH**  
Professor



**Amanda Dumas, MD**  
Associate Professor



**Ashley Farge, MD**  
Assistant Professor



**Corey Hebert, MD**  
Assistant Professor



**Marcella Houser, MD**  
Assistant Professor



**Suzanne Lefevre, MD**  
Associate Professor



**Betty Lo-Blais, MD**  
Professor



**Nathalie Medeiros, MD**  
Assistant Professor



**William Morgan, MD**  
Assistant Professor



**Alexis Morvant, MD**  
Assistant Professor

### CARDIOLOGY



**Thomas Kimball, MD**  
Professor  
Division Head,  
Cardiology



**Kurt Piggott, MD**  
Associate Professor  
Division Head,  
Cardiac ICU



**Tamara Bradford**  
Associate Professor



**Michael Brummund, MD**  
Associate Professor



**Kelly Gajewski, MD**  
Associate Professor



**Rachel Hansen, MD**  
Assistant Professor



**James Krulisky, MD**  
Assistant Professor



**LaTasha Lewis, MD**  
Assistant Professor



**Kiran Mallula, MD**  
Associate Professor



**Shannon Powell, DO**  
Assistant Professor



**Stefani Samples, MD**  
Assistant Professor



**Steffan Sernich, MD**  
Associate Professor



**Ernest Siwik, MD**  
Associate Professor



**Aluizio Stopa, MD**  
Associate Professor



**Jason Turner, MD**  
Assistant Professor

## CRITICAL CARE



**Gary Duhon, MD**  
Associate Professor  
Acting Division Head



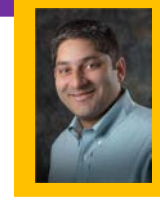
**Bonnie Desselle, MD**  
Professor  
Vice-Chair, Education



**Hannah Bauer, MD**  
Assistant Professor



**Amy Creel, MD**  
Associate Professor



**Nihal Godiwala, MD**  
Assistant Professor



**Richelle Monier, MD**  
Assistant Professor



**Janet Rossi, MD**  
Assistant Professor

## EMERGENCY MEDICINE



**Raghubir Mangat, MD**  
Associate Professor  
Division Head



**Jerussa Aita-Levy, MD**  
Associate Professor



**Anna McFarlin, MD**  
Assistant Professor



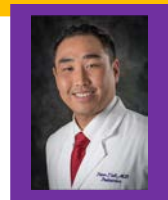
**Stuart Chalew, MD**  
Professor  
Division Head



**Dania Felipe, MD**  
Associate Professor



**Ricardo Gomez, MD**  
Associate Professor



**Peter Tieh, MD**  
Assistant Professor

## ENDOCRINOLOGY

## GASTROENTEROLOGY AND NUTRITION



**Dedrick Moulton, MD**  
Associate Professor  
Division Head



**Elizabeth Alonso, MD**  
Assistant Professor



**Paul Hyman, MD**  
Professor



**Brent Keith, MD**  
Associate Professor



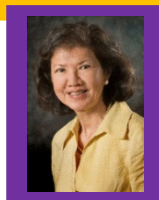
**Colleen LeBlanc, MD**  
Assistant Professor

## GENETICS



**Regina Zambrano, MD**  
Associate Professor

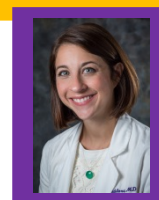
## HEMATOLOGY/ONCOLOGY



**Lolie Yu, MD**  
Professor  
Division Head



**Renee Gardner, MD**  
Professor



**Dana LeBlanc, MD**  
Assistant Professor



**Zachary LeBlanc, MD**  
Assistant Professor



**Cori Morrison, MD**  
Associate Professor



**Pinki Prasad, MD, MPH**  
Associate Professor



**Maria Velez, MD**  
Professor

## HOSPITAL MEDICINE



**Jay Hescock, MD**  
Associate Professor  
Division Head



**Lauren Davis, MD**  
Assitant Professor



**Robin English, MD**  
Professor



**Esteban Gershanik, MD**  
Assistant Professor



**Amanda Messer, MD**  
Assistant Professor



**Shannon Palombo, MD**  
Assistant Professor



**Amy Prudhomme, DO**  
Assistant Professor



**Leslie Reilly, MD**  
Assistant Professor



**Chelsey Sandlin, MD**  
Associate Professor



**Shubho Sarkar, MD**  
Assistant Professor

## NEONATOLOGY



**Brian Barkemeyer, MD**  
Professor  
Division Head  
Vice Chair, Clinical Services



**Julie Gallois, MD**  
Assistant Professor



**Raegan Gupta, MD**  
Associate Professor



**Michelle Knecht, MD**  
Assistant Professor



**Emily Masoumy, MD**  
Assistant Professor



**Christy Mumphy, MD**  
Associate Professor



**Staci Olister, MD**  
Associate Professor



**Jessica Patrick-Esteve, MD**  
Assistant Professor



**Dana Rivera, MD**  
Professor



**Jeff Surcouf, MD**  
Associate Professor

## NEPHROLOGY



**Diego Aviles, MD**  
Professor  
Division Head



**Isa Ashoor, MD**  
Associate Professor



**Caroline Straatmann, MD**  
Assistant Professor



**Rodolfo Bégué, MD**  
Professor  
Division Head

## INFECTIOUS DISEASES

## PEDIATRIC MENTAL HEALTH



**Joy Osofsky, PhD**  
Professor  
Division Head

## RHEUMATOLOGY



**Abraham Gedalia, MD**  
Professor  
Division Head

## RESEARCH



**Jovanny Zabaleta, PhD**  
Associate Professor