

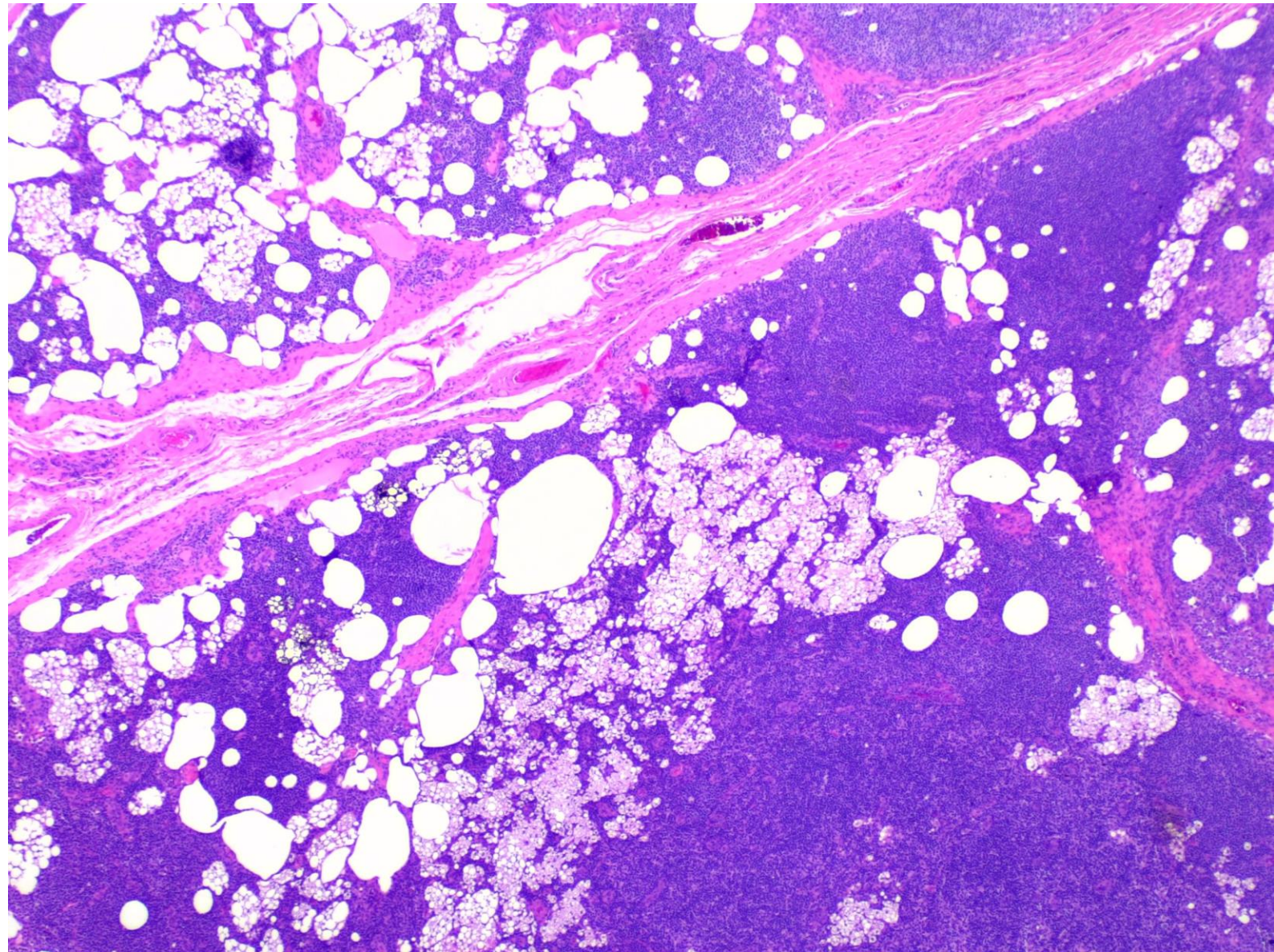


Picture Quiz December 2022

Ritu Bhalla

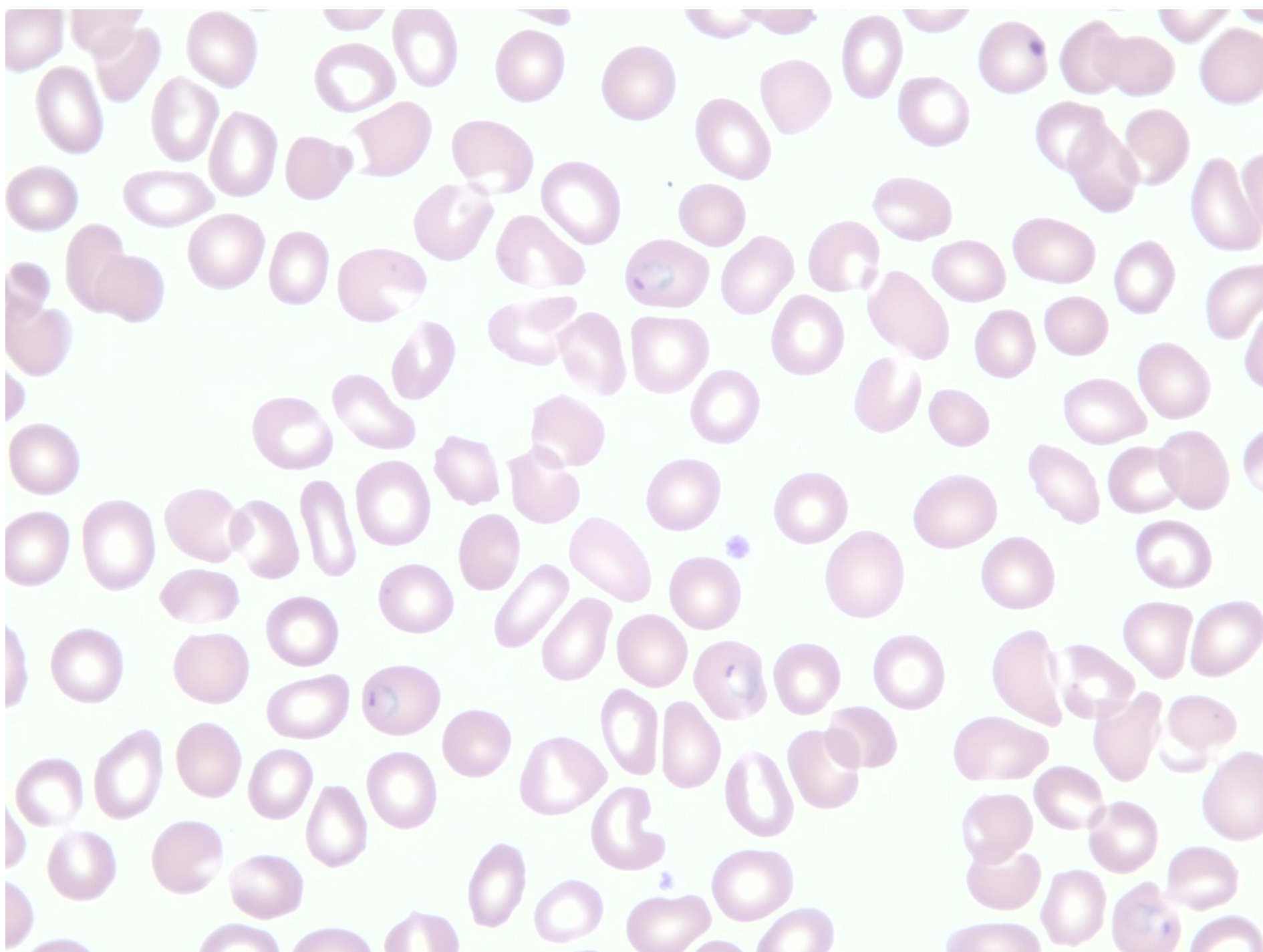
CASE 1

45-year-old female with history of treated breast cancer, presenting with enlarged axillary lymph node on 2 year follow up.



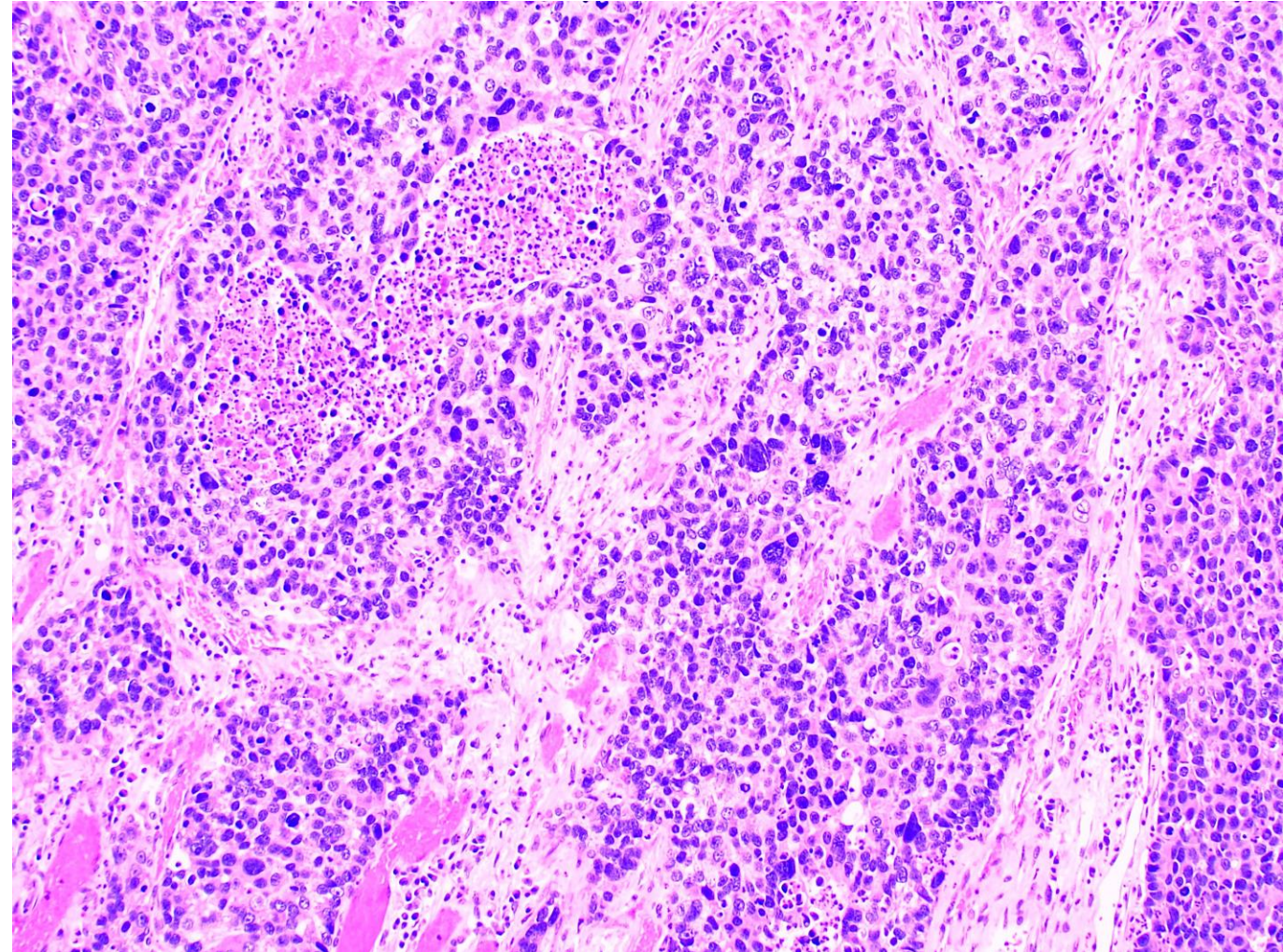
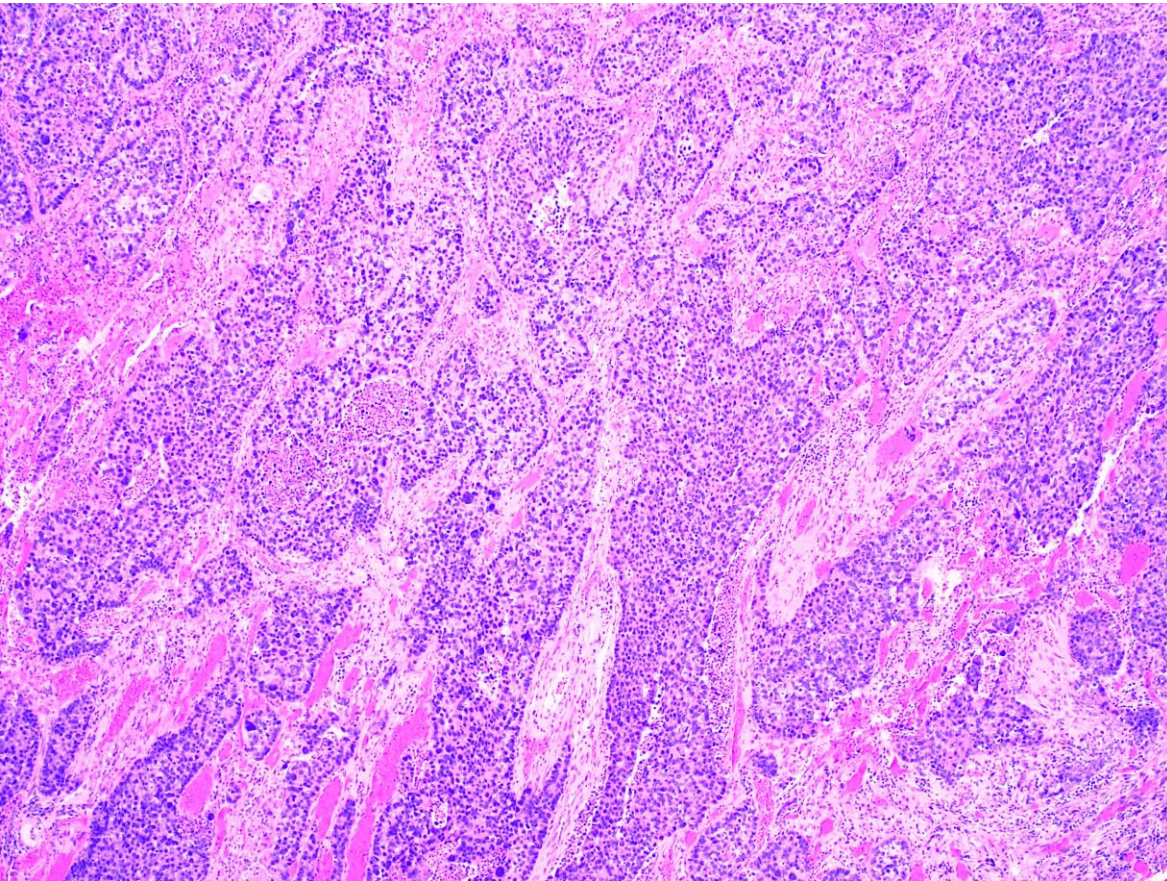
CASE 2

37-year-old
international traveler
presenting with fever

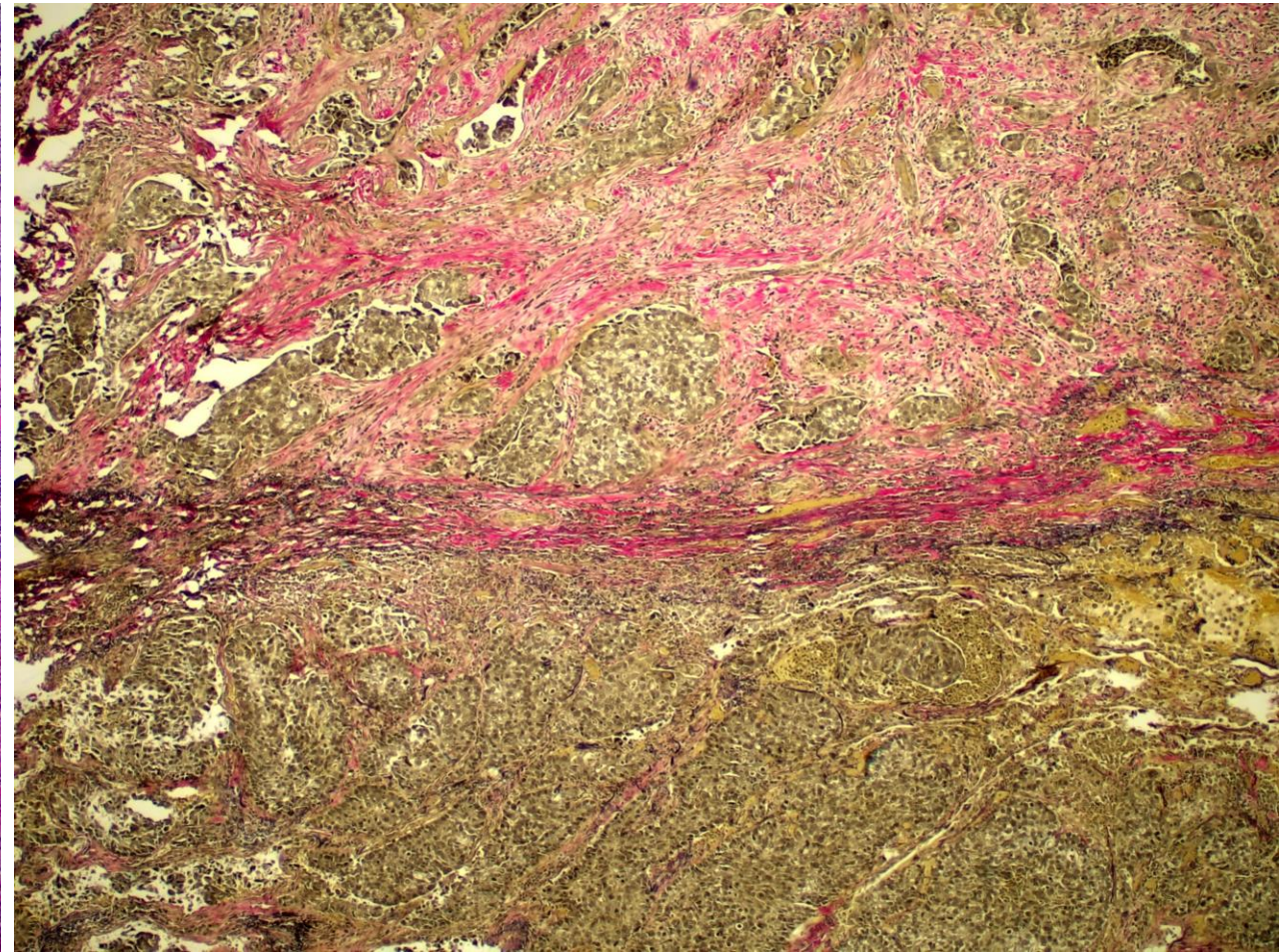
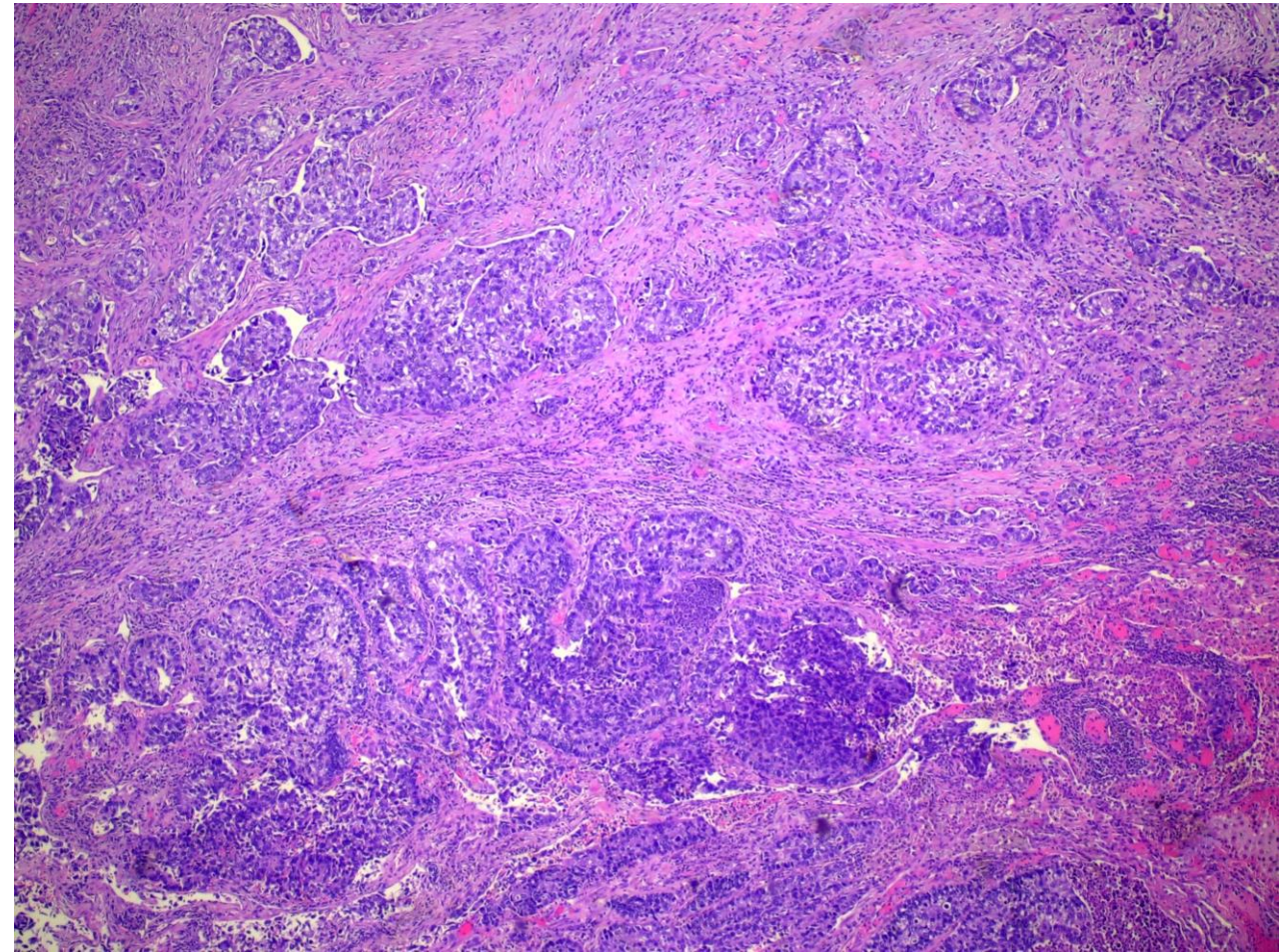


CASE 3

61-year-old female with 6.3 cm left upper lobe lung mass, staining negative with p63. What is your diagnosis (including subtype) and interpretation of VG stain (next slide)?

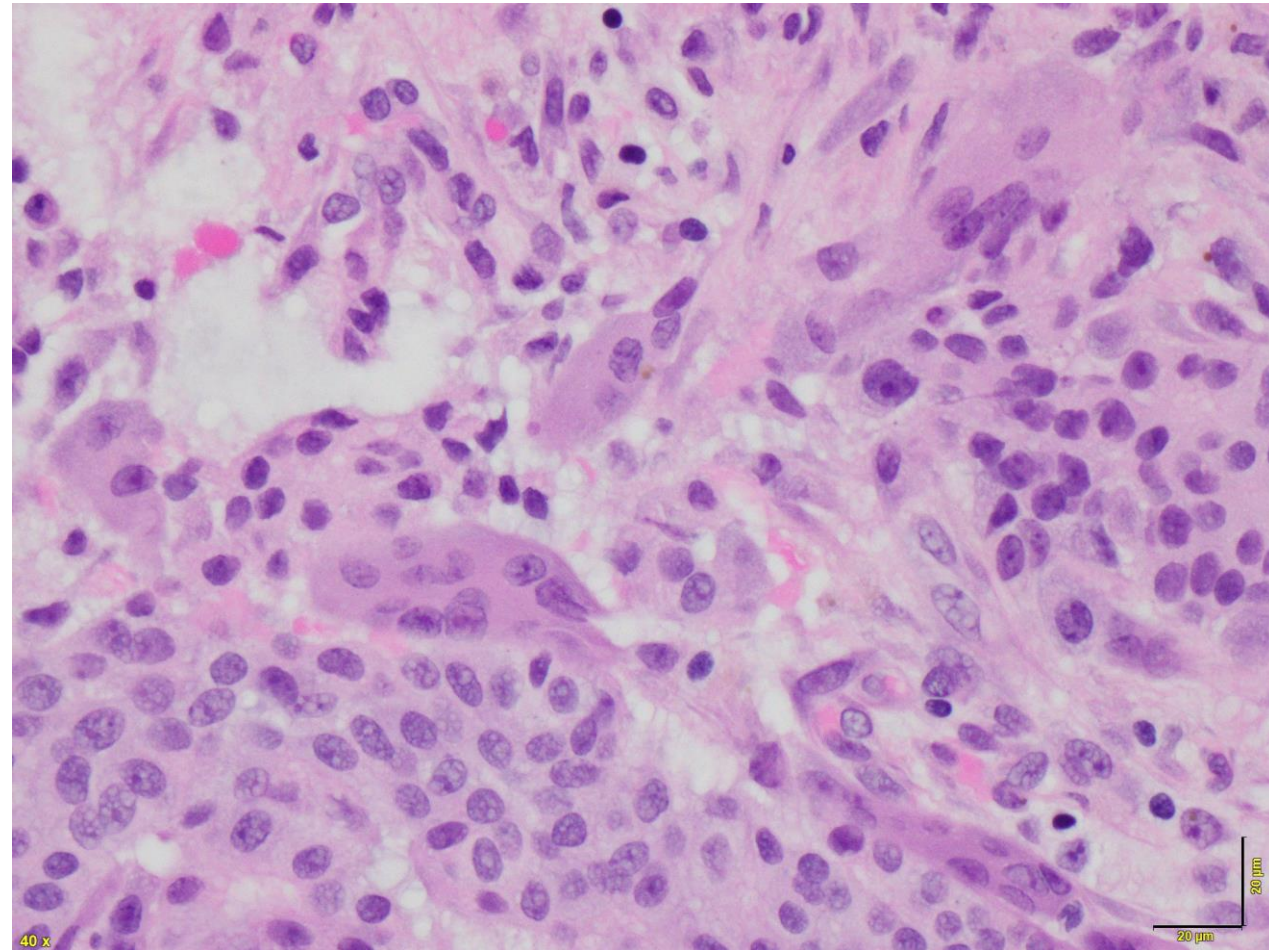
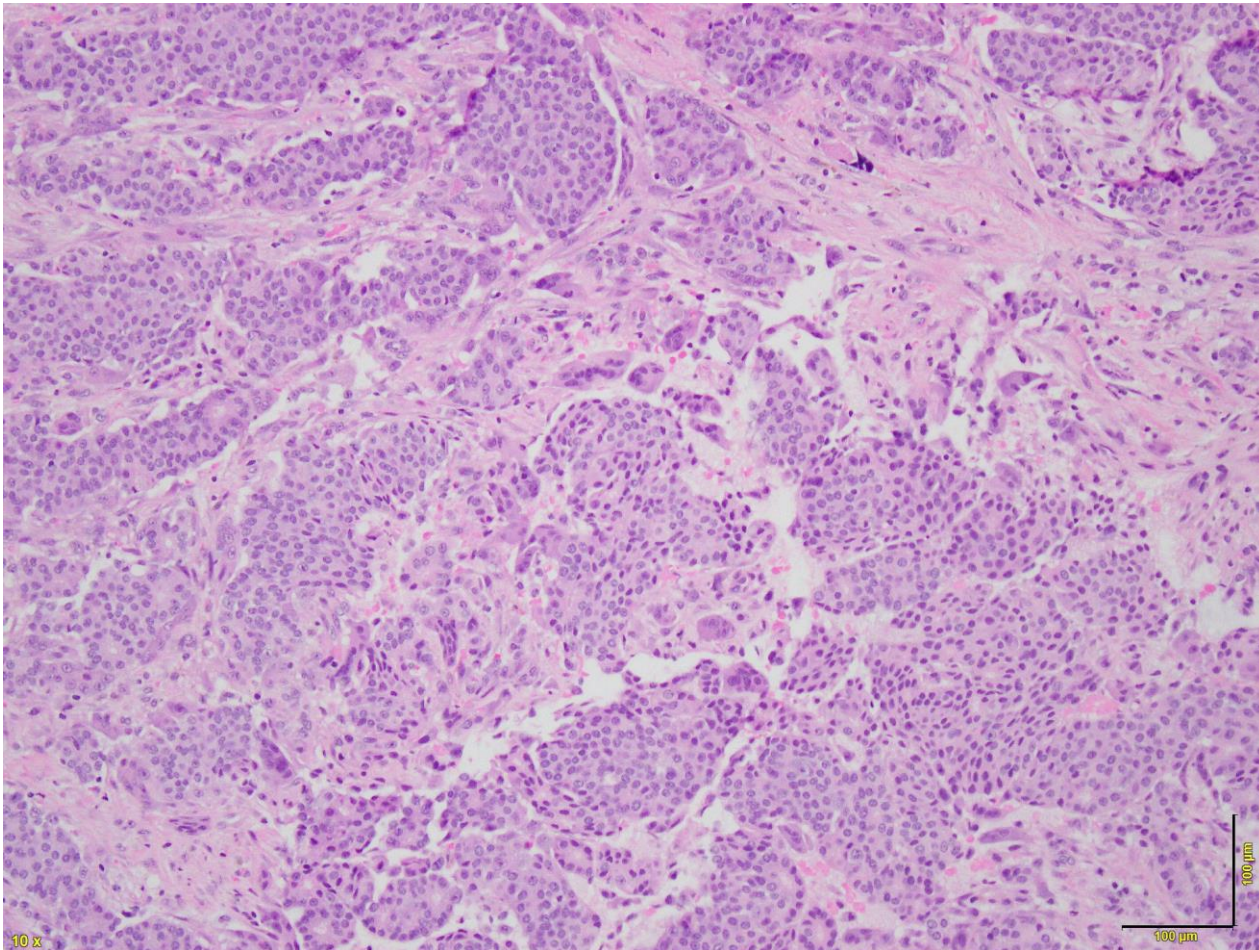


Pleural lesion, stained with VG elastin

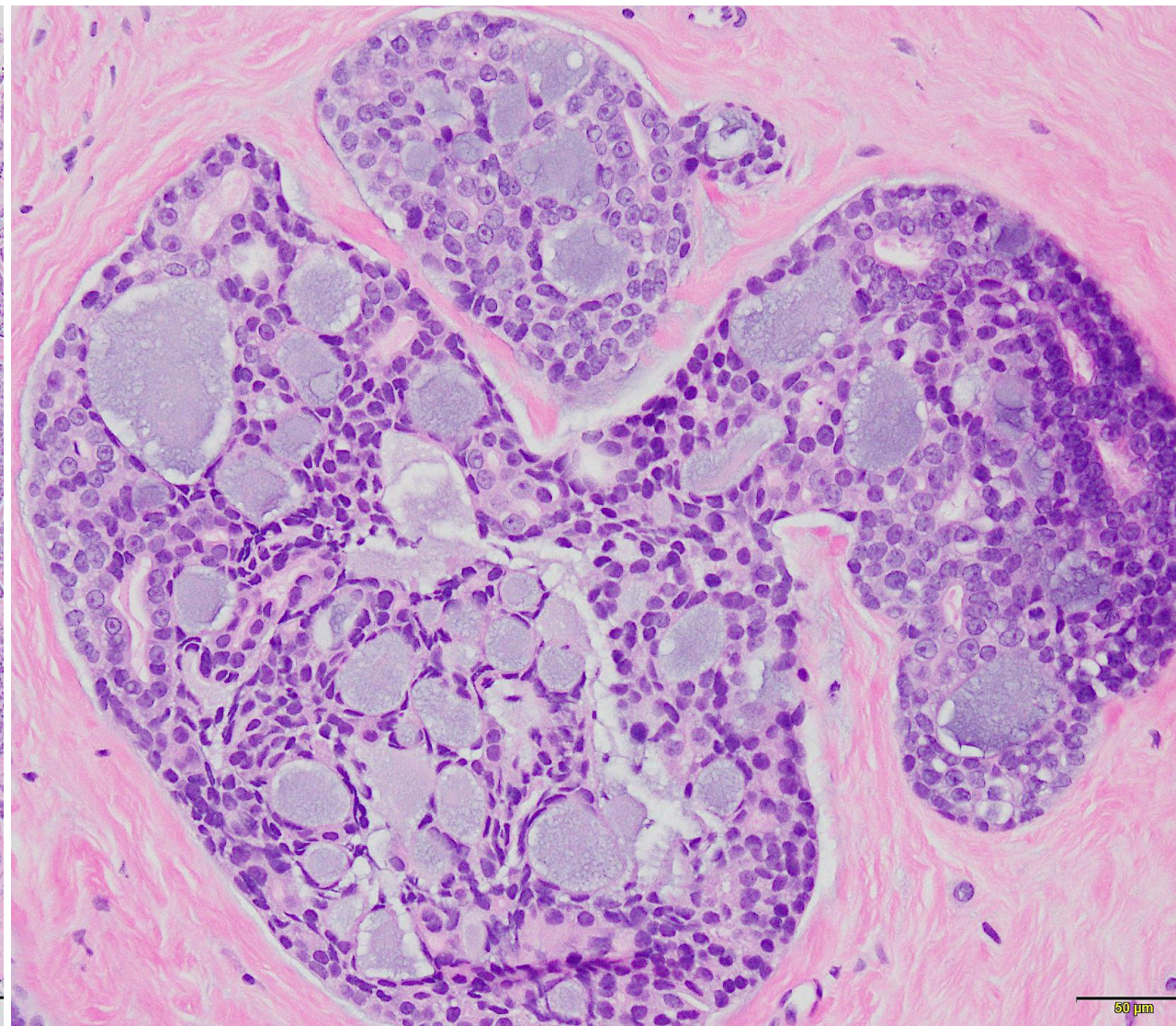
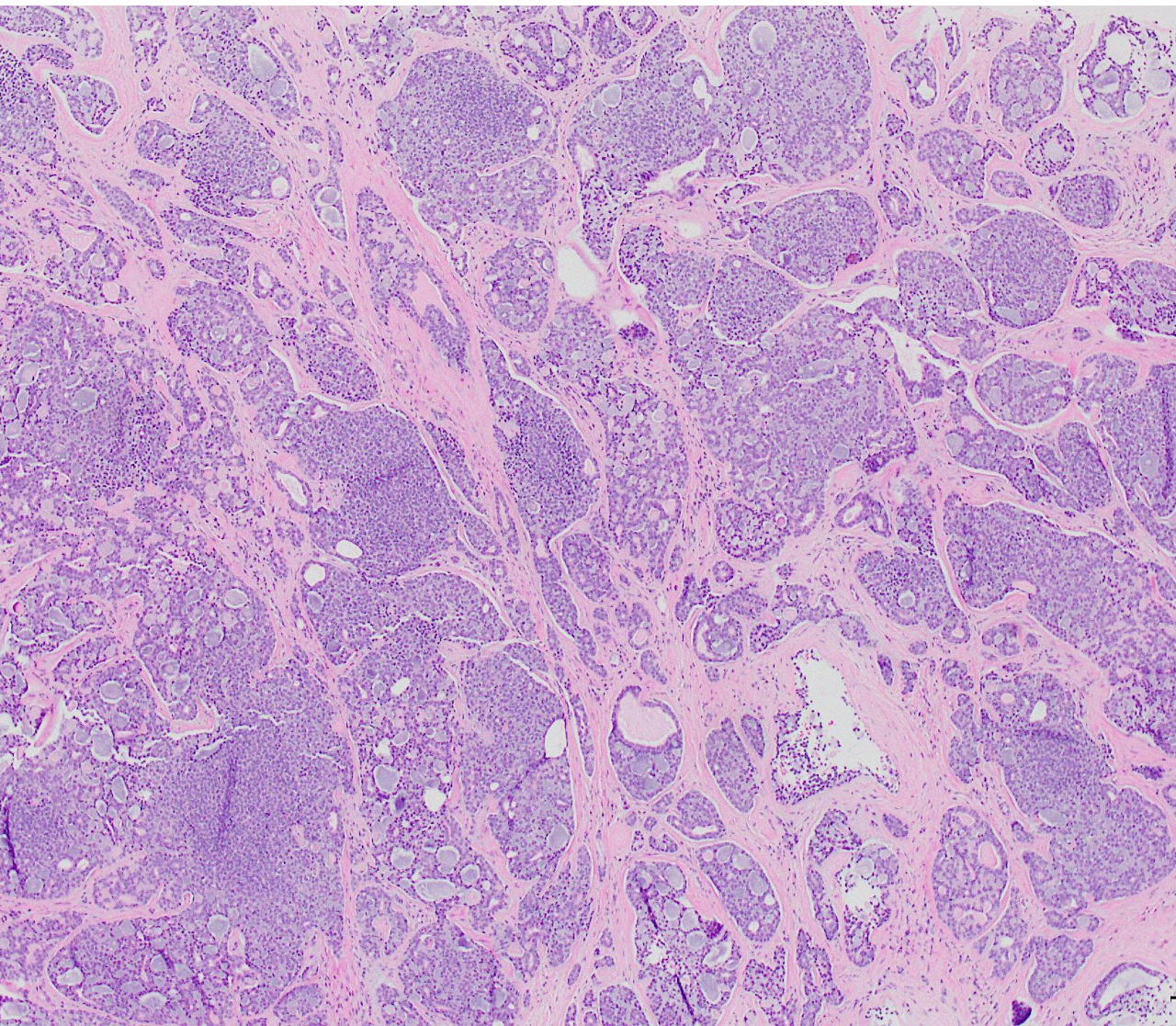


CASE 4

62-year-old female with 4.4 cm left breast mass



CASE 5 71-year-old female with 2.1 cm right breast mass



CASE 6

Who am I?

